



SMONO[®]

Ready for Adventure[®]

JADOO

Manual 2022 Ver. 3.1 English





SMONO

© 2022
Reinhart GmbH & Co. KG
Tempelhofer Str. 21
52068 Aachen Germany

Inhaltsverzeichnis

Safety instructions	4
Unpacking.....	8
Delivered items	8
Use	8
Charging the battery.....	8
Filling the chamber.....	10
Turning on	10
Turning off	11
Regulate airflow	11
Auto-shutoff timer.....	11
Cleaning	12
Plant material	14
Smono warranty	17
Liability	17
CE declaration of conformity.....	18
WEEE	18



Current information can be obtained from your Smono dealer.



Please read the instruction manual carefully before use. This manual is an integral part of the vaporizer and must be given to the user.

Safety instructions

The device is used for aromatherapy and is intended for use with dry herbs. This device is not intended for use with illegal substances and may only be used by adults over the age of eighteen. It should be kept away from children. Any other use is not permitted.

Maintenance and repair may only be performed by qualified personnel. To avoid electric shock, do not open the device yourself. Manufacturers and importers are not responsible for any damage caused by improper, incorrect, illegal or unreasonable use.

Never use electronic devices near water. To reduce the risk of electric shock, the device must be kept away from wet and moisture.

Please make sure that the USB cable is free and not kinked. Use only accessories that have been approved by the manufacturer. Make sure your power outlet is clean and in perfect condition. Allow your device to cool completely before putting it away. The vents and the air outlet of the vaporizer must not be obstructed, covered or blocked during operation or during the cooling phase.

Glass objects should never be dropped or placed down too firmly. Hot glass must not be exposed to cold water due to the risk of breakage. Cold heating and glass parts must first be heated to room temperature before power is connected. Glass should never be handled violently. If the glass parts are difficult to put together or loosen, they must be moved back and forth carefully, making it easier to separate the parts. All parts must be cleaned in this event.

This electrical device, which is also made of glass and a sensitive switching technology, must not fall, as it may break or shatter. The device may only be placed on dry and even surfaces.

Never leave the device unattended during operation or when cooling down.

This product is not approved as a medical device. Use the device only as intended.

Damaged devices may not be used.

The packaging elements, such as plastic bags, boxes, etc., must not be made accessible to children as they pose a potential hazard.

The information in this brochure is to be regarded only as an instruction, safety and informational manual. This information does not include or intend to be a medical advice or an approved guide. Nor can this information be used to diagnose and treat a health problem, the state of health or a condition.

In the event of technical problems, questions about the device as well as for repairs, warranty cases and disposal of the device, please contact the following address:

reinhardt™
Tempelhofer Str. 21
52068 Aachen
Email: info@smono.shop



Unpacking

Please check if all parts are in perfect condition after unpacking. The packaging elements must not be made accessible to children as they pose a potential hazard. Please keep the manual for future reference.

Delivered items

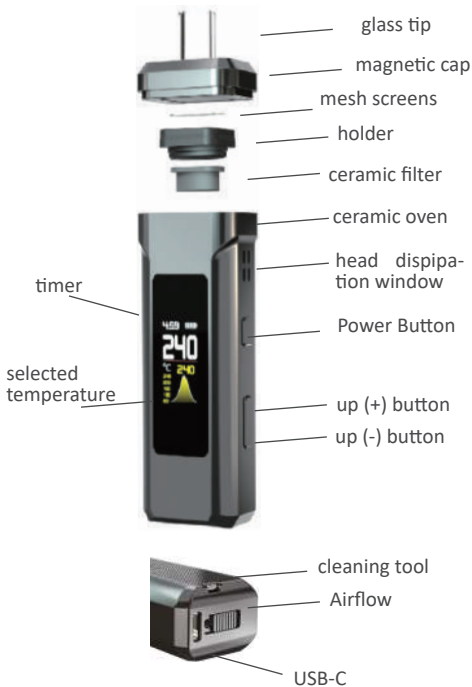
- Smono Jadoo EU Version
- Manual
- Cleaning Brush
- 2x Mesh Screen
- USB Cable
- Cleanung Brush
- Cleanung Tool

Use

The Smono vaporizer must not be used unattended. Lay the Smono vaporizer only on a heat-resistant, flat, stable and solid surface; never on soft or easily combustible surface.

Charging the battery

The recharge time for the battery is age dependent. It is about 45 minutes for a new discharged battery. Please fully charge the battery before first use. To do this, connect the USB cable to the vaporizer's mini USB charging socket and then to a suitable USB port.





Toggle °C/°F by pressing the power button and down button (-) at the same time

Filling the chamber

Please remove the magnetic cap. The herb chamber should be filled as completely as possible. If the chamber is only partially filled, the plant material can slip, so that the hot air flows past the herbs, without dissolving the flavours efficiently and completely.

Please do not compress the herbs too much in order to allow good air flow.

Please carefully remove excess plant material near the filling chamber in order to be able to place the mouthpiece tightly and close the chamber with the magnetic cap.

Turning on



Quickly tap the power button for 3 times to turn on the X1, it will begin to heat up immediately.

Press the „+“ button to turn up the temperature, or press „-“ button to turn down the temperature.

At a very high vapour intensity, the concentration of aromas and fragrances may cause respiratory irritation. In this case you should lower the temperature and thereby reduce the

intensity of the vapours.

Turning off

Please press the on / off switch three times within 2 seconds. Allow the Smono to cool completely before putting it away.

Regulate airflow

To regulate the airflow, please move the closure at the bottom of the Smono.

The slower the air stream flows into the herb chamber, the denser and more intensely the vapour is enriched with flavours. Open the air supply therefore as completely as possible at the start.

Auto-shutoff timer

To toggle auto-shutoff timer between 5 and 10 minutes, press the power button an up (+) button at the same time for three seconds.

Cleaning

As the vapours cool, there will inevitably be residues in the glass mouthpiece and herb chamber. These parts must be thoroughly cleaned regularly to ensure proper function and taste.

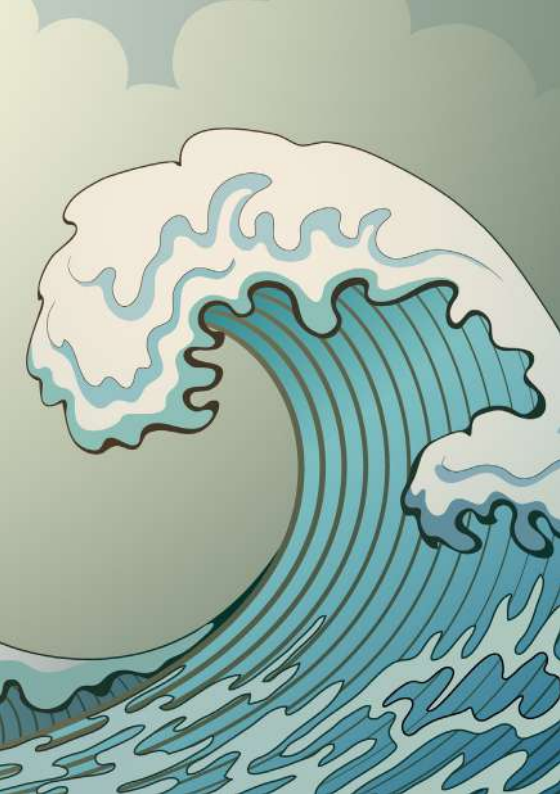
For rough cleaning use the enclosed cleaning brush. Free the sieve, the herb chamber and the mouthpiece of contaminants after each use.

To completely remove residue from the Smo-no, please use a cleaning brush, cotton swabs or paper towels.



To avoid damage to the vaporizer, we recommend a non-alcoholic, gentle vaporizer cleaner such as LaPiLu™ or the Smono™ Cleaner.

Before assembling the sieve, mouthpiece and sealing ring, allow all parts to dry well.



**Plant material**

If you have health problems, consult your doctor before using the Smono vaporizer. Allergic reactions to plant parts are possible.



Please use only plant parts that have been tested according to the guidelines of the European Pharmacopoeia. Please note that such plants or plant parts can only be purchased in your pharmacy.

For best results you can influence the vaporization temperature and the density of the steam. If the vapour is too dense or the temperature too hot, it may affect the taste. In order to gently release as many aromas as possible from the plant parts without affecting the taste, the herbs should be ground as finely as possible. A high-quality herbal grinder is recommended for this purpose.

Depending on the factors of temperature, vapour density and nature of the herbs, the vaporization process can be repeated a few times, until all aromas and fragrances are completely dissolved. If vapours no longer form at maximum temperature, the vaporization process is finished.



Chamomile 190C

Real chamomile (*Matricaria chamomilla* L.) is a plant species within the daisy family. The species, which was originally distributed in southern and eastern Europe, is practically native to all of Europe today. Only the flowers are used.



Sage 190C

Sage (*Salvia officinalis*) is an evergreen, up to 80 cm high herb with angular stems and grey-green leaves. The leaves can be used.



Thyme 190C

Thyme (*Thymus vulgaris*) is an aromatic fragrant shrub with woody stems, narrow leaves and pink-coloured flowers that can grow up to 40 cm. Both the flowers and the young leaflets are used.



Smono warranty

The manufacturer's warranty for the Smono is 1 year.



Please register your Smono on www.smono.shop within 90 days of purchase, to extend your warranty to 3 years.

The warranty begins on the date the buyer received the Smono.

Liability

Please note: Handling of the product requires exact knowledge of and observance of this instruction manual. Liability for the safe function of the product is in any case transferred to the operator, if an action takes place, which does not correspond to the intended use. Intended use refers in particular exclusively to

the plant materials mentioned in the section „Plant parts“.

Failure to comply with the instructions contained in this manual will invalidate the liability of Reinhart GmbH & Co. KG

CE declaration of conformity

According to EU Regulation 765/2008, the present product (the Smono Basic vaporizer) meets the requirements.

WEEE

For the purposes of environmental protection, this device must not be disposed of with household waste at the end of its service life. Disposal can be made via Take-e-way customer service or locally available return and collection systems.

The WEEE directive serves to reduce the increasing amount of electronic waste from disused electrical and electronic equipment.

The registered manufacturer number for the present device is:
WEEE-Reg.-Nr. DE 47152642
Stiftung-ear.de



